

# MANISCOPIC

# MVT 628

Turbo

- Lift Capacity: 6,000 lb.
- Maximum Lift Height: 20 ft. 8 in.
- Maximum Forward Reach: 11 ft. 7 in.
- Perkins 101 HP Engine
- Varioshift Hydrostatic Transmission
- Four Wheel Drive
- Three Steering Modes

*Varioshift  
Transmission*



 **MANITOU**<sup>®</sup>

# MVT 628 Turbo



## Lift Capacity:

Maximum (24 in. load center) .....6,000 lb.



## Lift Height:

Maximum lift height.....20 ft. 8 in.

Maximum forward reach.....11 ft. 7 in.



## Tires:

.....15.00 x 19.5 14PR



## Forks:

Length .....48 in.

Thickness/width .....1.75 in. x 5 in.

Carriage rotation .....135°



## Brakes:

.....Multidisc - hydraulically assisted on front axle



## Engine:

Type.....Perkins 1104 C.44T Turbo Diesel

Displacement .....4 cyl. 268 cu. in.

Power.....101 HP/74.5 kw

Maximum Torque .....304 lbf-ft at 1400 rpm

Injection .....Direct

Cooling .....Water



## Transmission:

Type .....Hydrostatic

Electro-hydraulic reversing shift

Maximum travel speed .....21 mph



## Hydraulics:

Pump .....Gear type

Flow .....3400 PSI - 21 gpm



## Capacities:

Cooling system.....4.2 gal.

Engine oil .....2.1 gal.

Hydraulic oil.....21 gal.

Fuel tank.....25 gal.



## Specifications:

Weight (base unit) .....12,300 lb.

Turning radius (outside wheels).....12 ft. 9 in.

Overall height.....6 ft. 6 in.

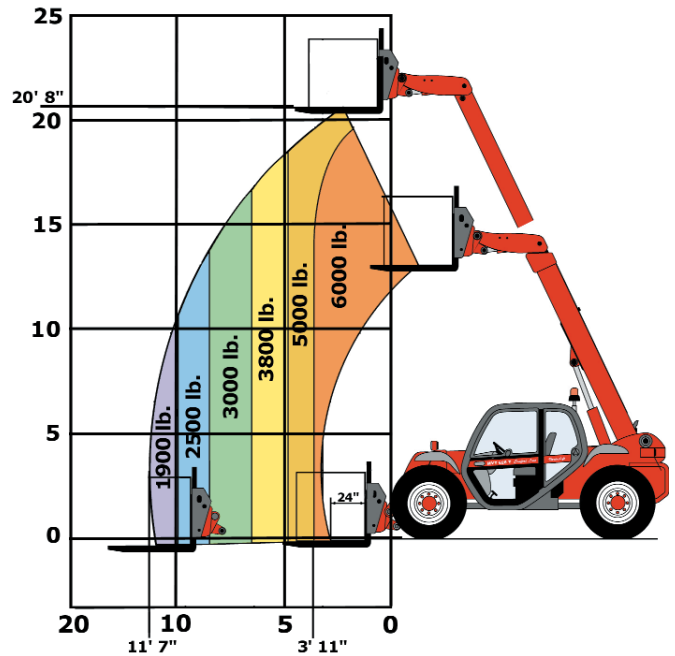
Overall width.....6 ft. 6 in.

Overall length (without forks) .....14 ft. 6 in.

Ground clearance .....14 in.

Maximum drawbar pull.....12,800 lbf.

## LOAD CAPACITY CHART



Capacities shown in pounds/feet are the maximum recommended load limits at the indicated extensions of the boom. Capacity ratings are based on a 48" homogeneous cube and are in accordance with ANSI/ASME B56.6 stability standards. Capacity reductions must be made for extended load centers and when used with various other attachments, contact MANITOU NORTH AMERICA, INC.

## DIMENSIONS:

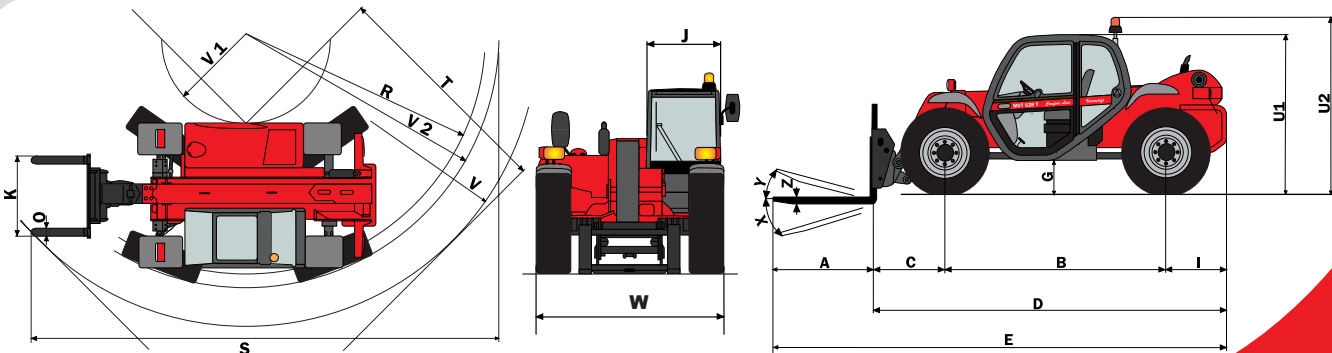
A.....	48
B.....	108
C.....	37
D.....	174
E.....	222
F.....	62
G.....	14
I.....	29
J.....	36
K.....	41
O.....	5
R.....	173
S.....	290
T.....	138
U <sup>1</sup> .....	78
U <sup>2</sup> .....	88
V.....	181
V <sup>1</sup> .....	64
V <sup>2</sup> .....	181
W.....	78
X.....	123°
Y.....	12°
Z.....	40

## STANDARD EQUIPMENT:

- Enclosed Cab
- Hydrostatic Steering with 2 Wheel Steer / 4 Wheel Steer / Crab Steer Mode
- Full Time 4 Wheel Drive
- Limited Slip Front Axle
- Outer Planetary Hubs
- Deluxe Suspension Seat with Seat Belt
- Full Instrumentation
- Road Lights
- Two Front Worklights
- Left Hand Rear Worklight
- Horn
- Backup Alarm
- Inboard Wet Disc Brakes
- Parking Brake
- Quick Fit Tool System
- Automatic Attachment Leveling
- Hydraulic Holding Valves
- Auxiliary Boom Hydraulics
- Left & Right Side Mirrors
- Neutral Start Switch
- Tow Pin

## OPTIONAL EQUIPMENT:

- A wide variety of attachments and options are available to meet the customer's individual applications



Dealer:



MANITOU NORTH AMERICA, INC. - P.O. Box 21386 - Waco, TX 76702-1386  
Tel: 800-433-3304 - Fax: 254-799-4433 - www.manitou-na.com