

# Twisco

## SLT 415B



- **Lift Capacity: 3,000 lb.**
- **Maximum Lift Height: 13 ft.**
- **Maximum Forward Reach: 7 ft. 10 in.**
- **Hydrostatic Transmission**
- **Perkins 52 HP Engine**
- **Compact: 65.5 in. wide**
- **Turning Radius: 88 in.**

Shown with optional auxiliary hydraulics  
and front and rear glass with wipers

 **MANITOU**

# SLT 415B



## Lift Capacity:

Maximum (24 in. load center) .....3,000 lb.



## Lift Height:

Maximum lift height .....13 ft.

Maximum forward reach .....7 ft. 10 in.

Maximum below grade reach .....24 in.



## Tires:

.....10 x 16.5 10PR SKS



## Forks:

Length .....42 in.

Thickness/width .....1.375 in. x 4 in.

Carriage tilt .....98°



## Brakes:

Service (pedal) .....Hydrostatic

Parking brake ....Negative disc with electrical control



## Engine:

Type .....Perkins 404C-22

Displacement .....4 cyl. 135 cu. in.

Horsepower (@3000 rpm) .....52 HP

Maximum Torque (@1800 rpm) .....105 ft.lb.

Injection .....Direct

Cooling .....Water



## Transmission:

Type .....Hydrostatic

Electro-hydraulic reversing shift

Speeds forward/reverse .....1/1



## Hydraulics:

Pump .....Gear type

Flow .....3,600 PSI - 11 gpm

Flow divider with priority to steering and braking



## Capacities:

Cooling system .....2 gal.

Engine oil .....2.5 gal.

Hydraulic oil .....11.5 gal.

Fuel tank .....18.5 gal.



## Specifications:

Weight (base unit) .....5,236 lb.

Turning radius (outside wheels) .....88 in.

Overall height .....75 in.

Overall width .....65.5 in.

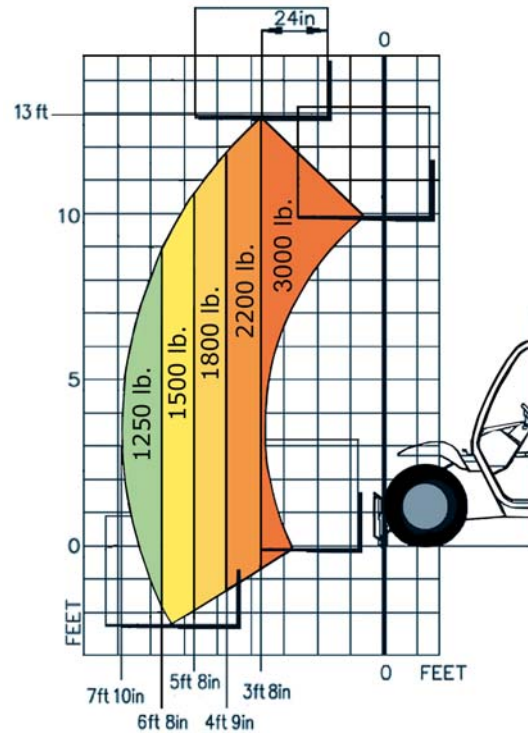
Overall length (without forks) .....124 in.

Ground clearance .....10 in.

Maximum drawbar pull .....4,250 lbf.

## LOAD CAPACITY CHART

CALCULATED WITH CARRIAGE AND 42" FORKS  
(OPTIONAL ATTACHMENTS CAN DERATE THIS CHART)



Capacities shown in pounds/feet are the maximum recommended load limits at the indicated extensions of the boom. Capacity ratings are based on a 48" homogeneous cube and are in accordance with ANSI/ASME B56.6 stability standards. Capacity reductions must be made for extended load centers and when used with various other attachments, contact MANITOU NORTH AMERICA, INC.

## DIMENSIONS:

A.....43	O.....44
B.....79	P <sub>2</sub> .....33°
C.....26	P <sub>3</sub> .....64°
C <sub>1</sub> .....80	R.....88
D.....124	S.....181
E.....168	T.....107
F.....55	U.....75
G.....6	V.....111.5
G <sub>1</sub> .....10	V <sub>1</sub> .....6
H.....29.5	V <sub>2</sub> .....94
I.....153	W.....65
J.....29.5	Y.....116°
K.....36	Y <sub>1</sub> .....39°
L.....1.5	Z.....11°
M.....24	Z <sub>1</sub> .....87°
N.....51	

## STANDARD EQUIPMENT:

- 3 Wheel Hydrostatic Drive
- Telescopic Boom Design
- Full Visibility
- Ergonomic Operator's Compartment
- Full Instrumentation
- JSM Joystick Control
- Back up Alarm

## OPTIONAL EQUIPMENT:

- A wide variety of attachments and options are available to meet the customer's individual applications

